

Care Management PCMH Committee

Person-Centered Medical Home Program Update December 14, 2022



PCMH Program Status

As of November 30, 2022

PCMH Program Participants		Sites		Providers	
10/31/22	11/30/22	10/31/22	11/30/22	10/31/22	11/30/22
122	123	554	553	2,411	2,438
93 PCMH Approved Practices NCQA Sustained Recognition		18 Glide Path Practices Working Towards NCQA Recognition		0 Glide Path Renewal Practices Working towards NCQA Renewal Recognition	
				16 PCMH Accredited Practices Includes FQHCs	

Note: 4 Practices have sites in both PCMH & Glide Path Programs

PCMH Approved Practices

PCMH Approved Practices

10/31/22

93

11/30/22

93

New Approved Practices: 0

Completed Glide Path: 0

Termed Practices: 0

PCMH Approved Sites

10/31/22

380

11/30/22

378

New Approved Sites: 0

Completed Glide Path: 0

Sites Termed: 2

PCMH Approved Providers

10/31/22

1,782

11/30/22

1,811

Completed Glide Path: 0

Providers Added: 41

Providers Termed: 12

PCMH Adult & Pediatric Practices

93 PCMH Approved
Practices

378
PCMH Approved Sites

37 Internal
Medicine
PCMH
Practices
with **181** Sites

22 Family
Medicine
PCMH
Practices
with **99** Sites

53 Pediatric
PCMH
Practices
with **97** Sites

1 Geriatric
PCMH
Practice
with **1** Site

This data reflects current information through November 30, 2022

*Note: 8 Practices have sites in 3 of the 4 categories & 4 Practices have sites in 2 of the 4 categories.
Sites are counted once.*

PCMH Glide Path Practices

Glide Path Practices

10/31/22

17

11/30/22

18

New Practices: 1

Completed Glide Path: 0

Practices Termed: 0

0

Glide Path Renewal Practice

Completed Glide Path Renewal: 0

Glide Path Sites

10/31/22

31

11/30/22

32

New Practice Sites: 2

Completed Glide Path: 0

Sites Termed: 1

Glide Path Providers

10/31/22

72

11/30/22

76

New Providers: 2

Completed Glide Path: 0

Providers Added: 2

Providers Termed: 0

0 Sites
0 Providers

Sites Completed Glide Path Renewal: 0

Providers Completed Glide Path Renewal: 0

PCMH Accredited Program Participants

Federally Qualified Health Centers (FQHCs) and FQHC look-alikes are program participants*

PCMH Accredited Participants

10/31/22

16

11/30/22

16

No Change

PCMH Accredited Sites

10/31/22

143

11/30/22

143

Sites Added: 0

Sites Termined: 0

PCMH Accredited Providers

10/31/22

557

11/30/22

551

Providers Added: 32

Providers Termined: 38

*Federally Qualified Health Centers (FQHCs) and FQHC look-alikes are PCMH program participants if they are pursuing and/or have obtained the Joint Commission Ambulatory Care accreditation with Primary Care Medical Home certification as well as NCQA recognition.



PCMH CY2022 Program Recruitment

Recruitment as of November 30, 2022

- **37 Practice Sites**
 - 10 New Practice Sites
 - 27 New Sites from Current PCMH Practices
- **79 Providers**
 - 23 From New Practice Sites
 - 56 From New Sites from Current PCMH Practices

Practice Recruitment Opportunities

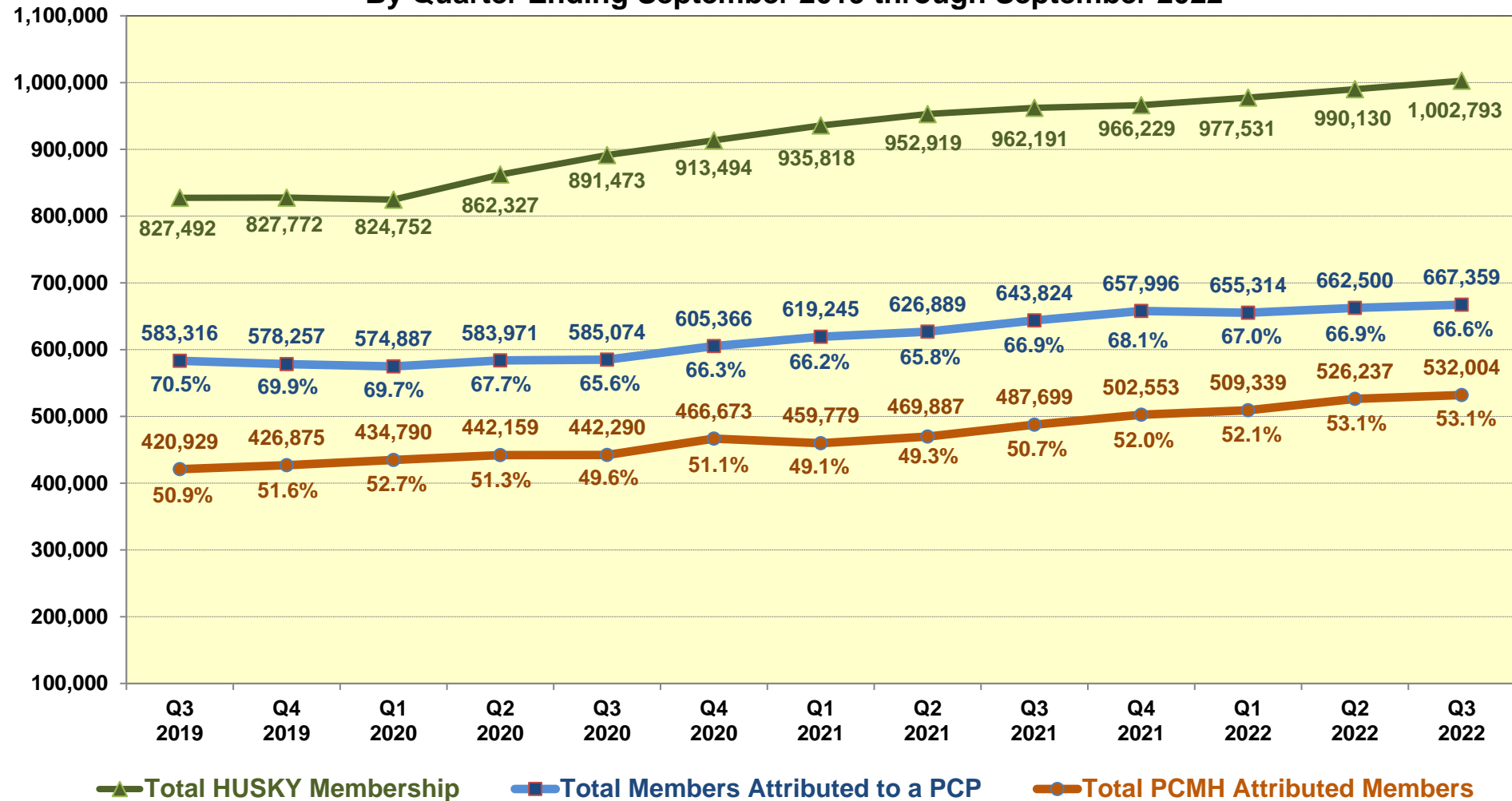
3 Practice Sites

7 Providers

These are eligible primary care practices that are most likely to enroll in the PCMH program in 2022-2023.

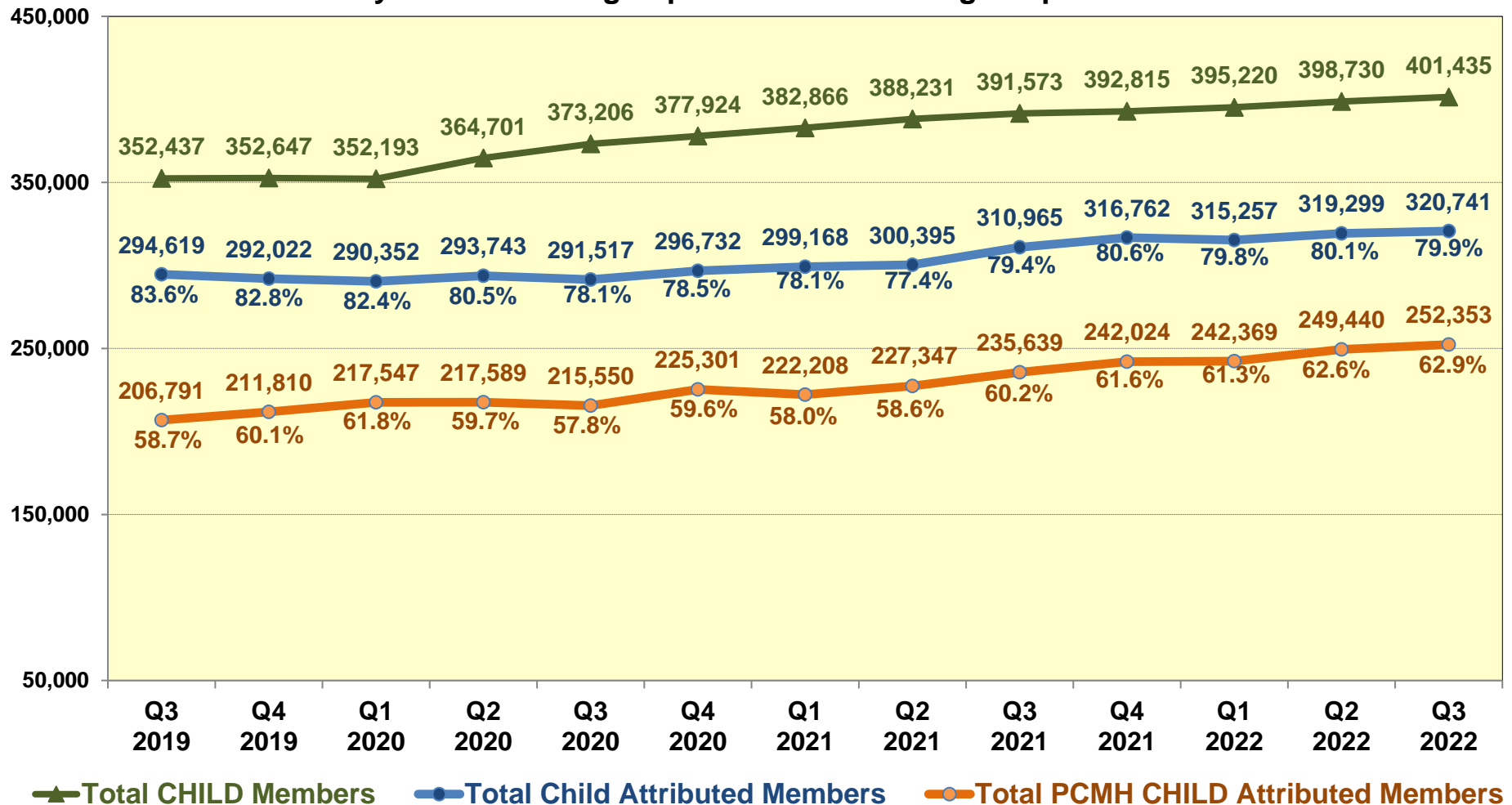
PCMH Program Member Attribution

Summary of Total HUSKY Membership, Total Members Attributed to a PCP
and Total PCMH Attributed Members
By Quarter Ending September 2019 through September 2022



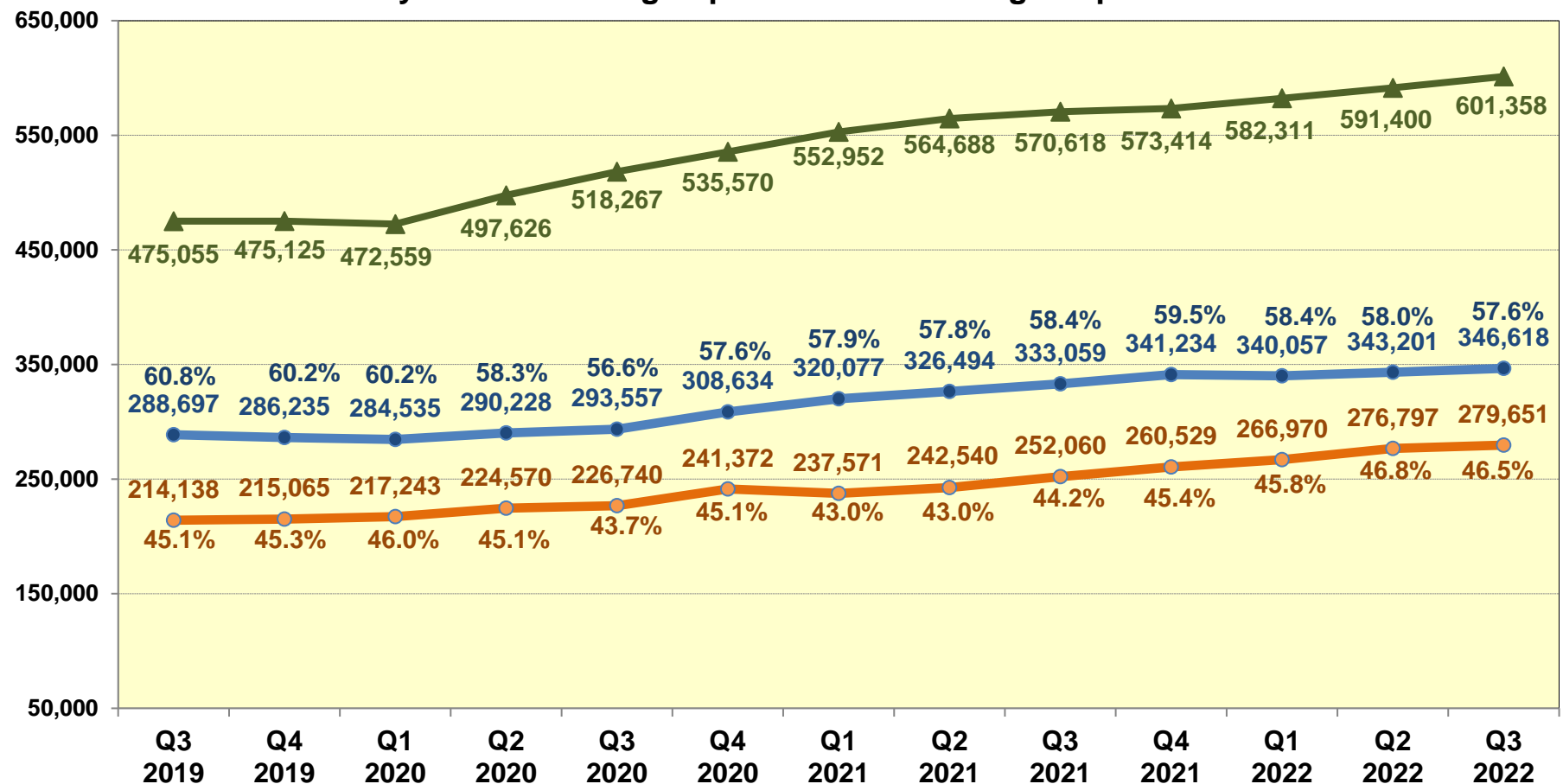
PCMH Program CHILD Member Attribution

Comparison of Total CHILD Members, Total CHILD Attributed Members,
and Total PCMH CHILD Attributed Members
By Quarter Ending September 2019 through September 2022



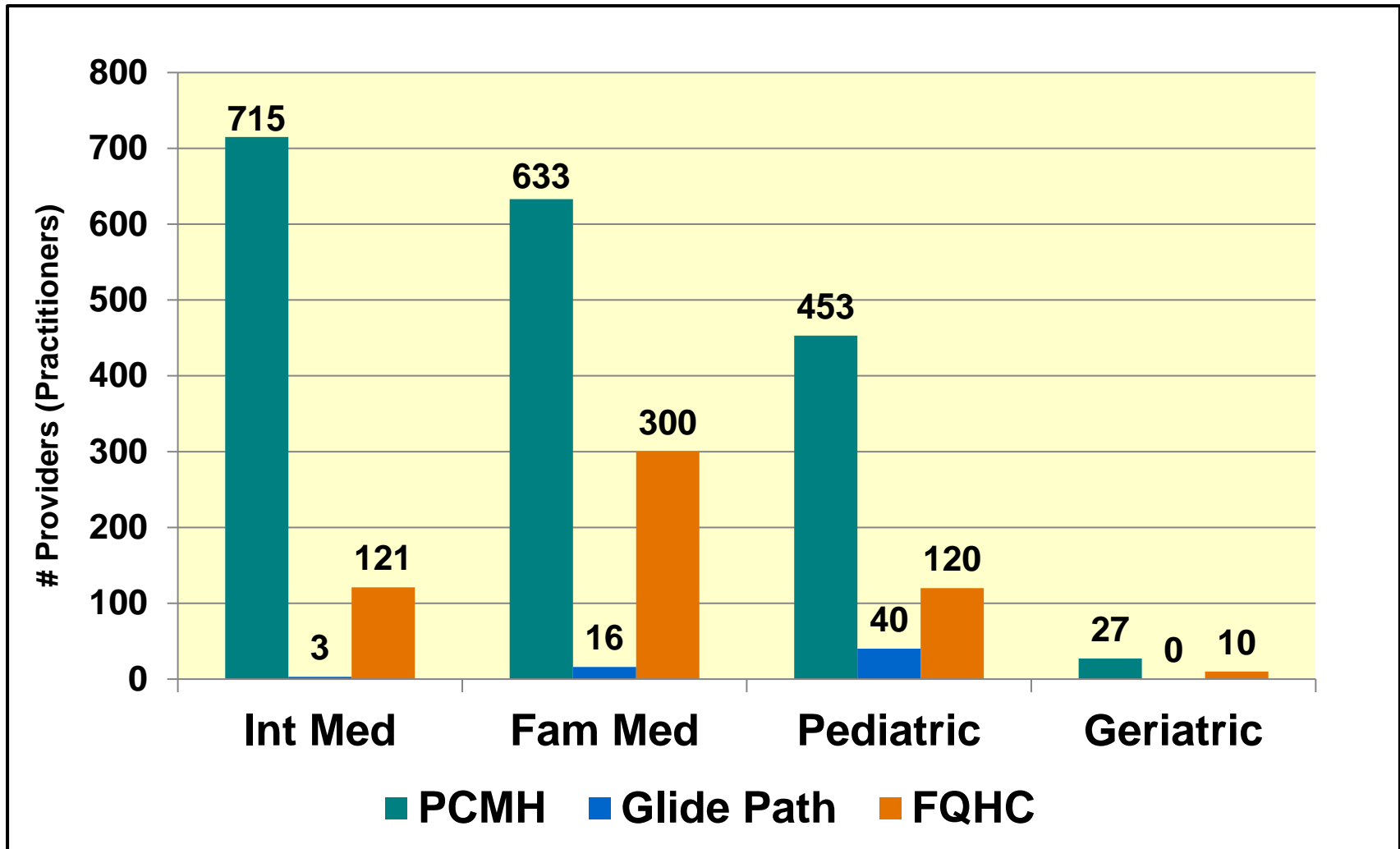
PCMH Program ADULT Member Attribution

Comparison of Total ADULT Members, Total ADULT Attributed Members,
and Total PCMH ADULT Attributed Members
By Quarter Ending September 2019 through September 2022

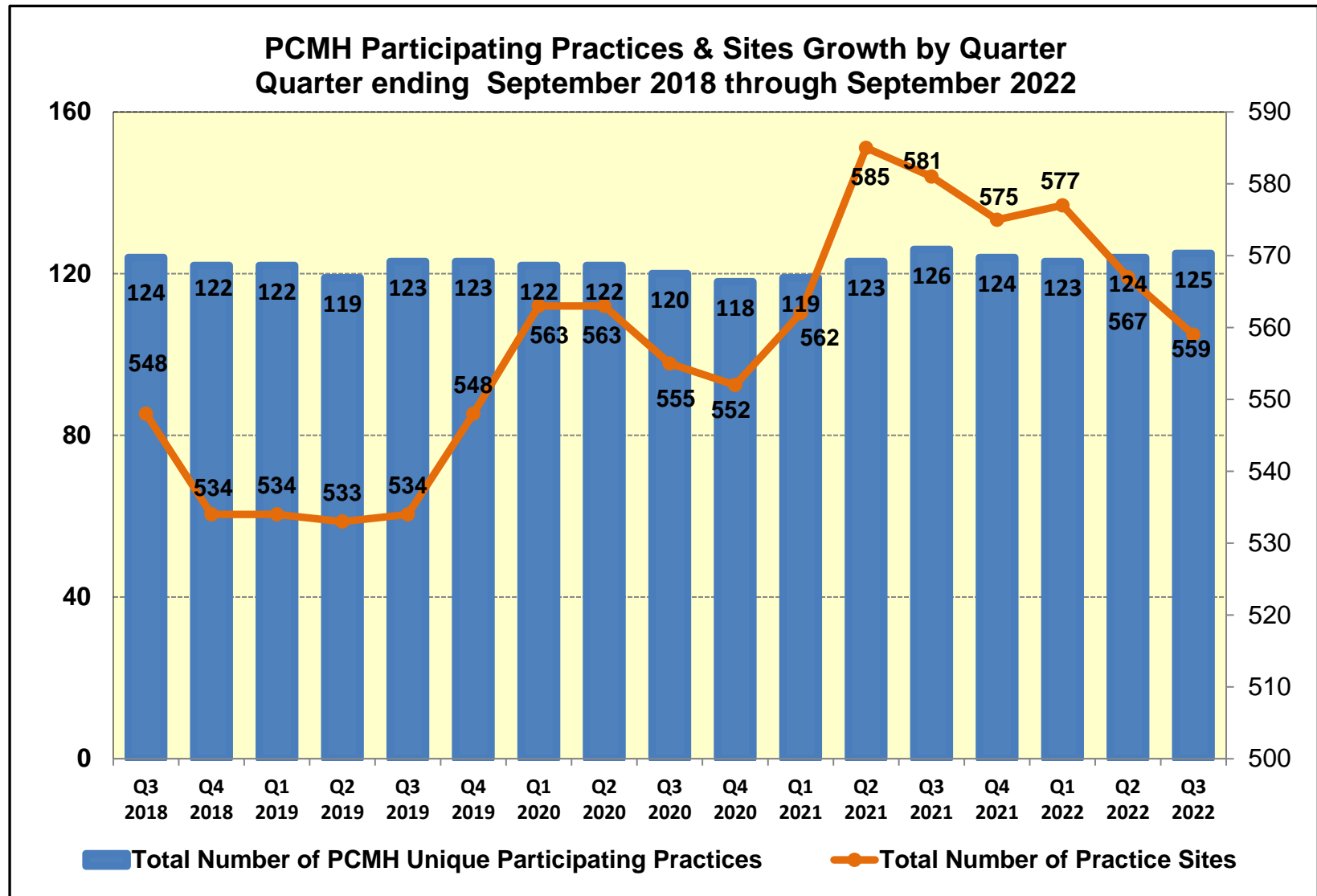


▲ Total ADULT Members ● Total Adult Attributed Members ● Total PCMH ADULT Attributed Members

Provider Specialty by PCMH Program Participation as of November 30, 2022

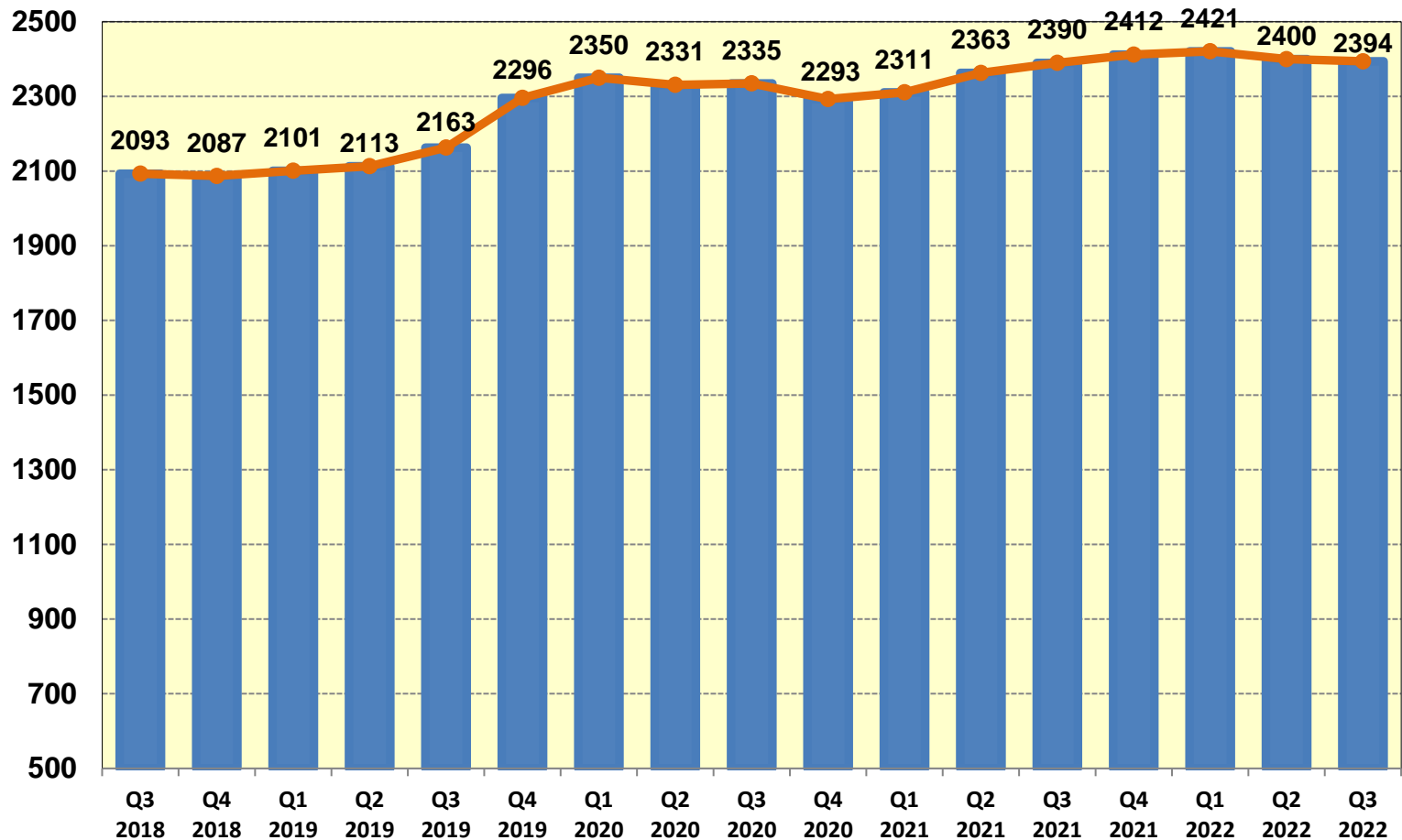


PCMH Program Growth-Practices & Sites



PCMH Program Growth - Providers

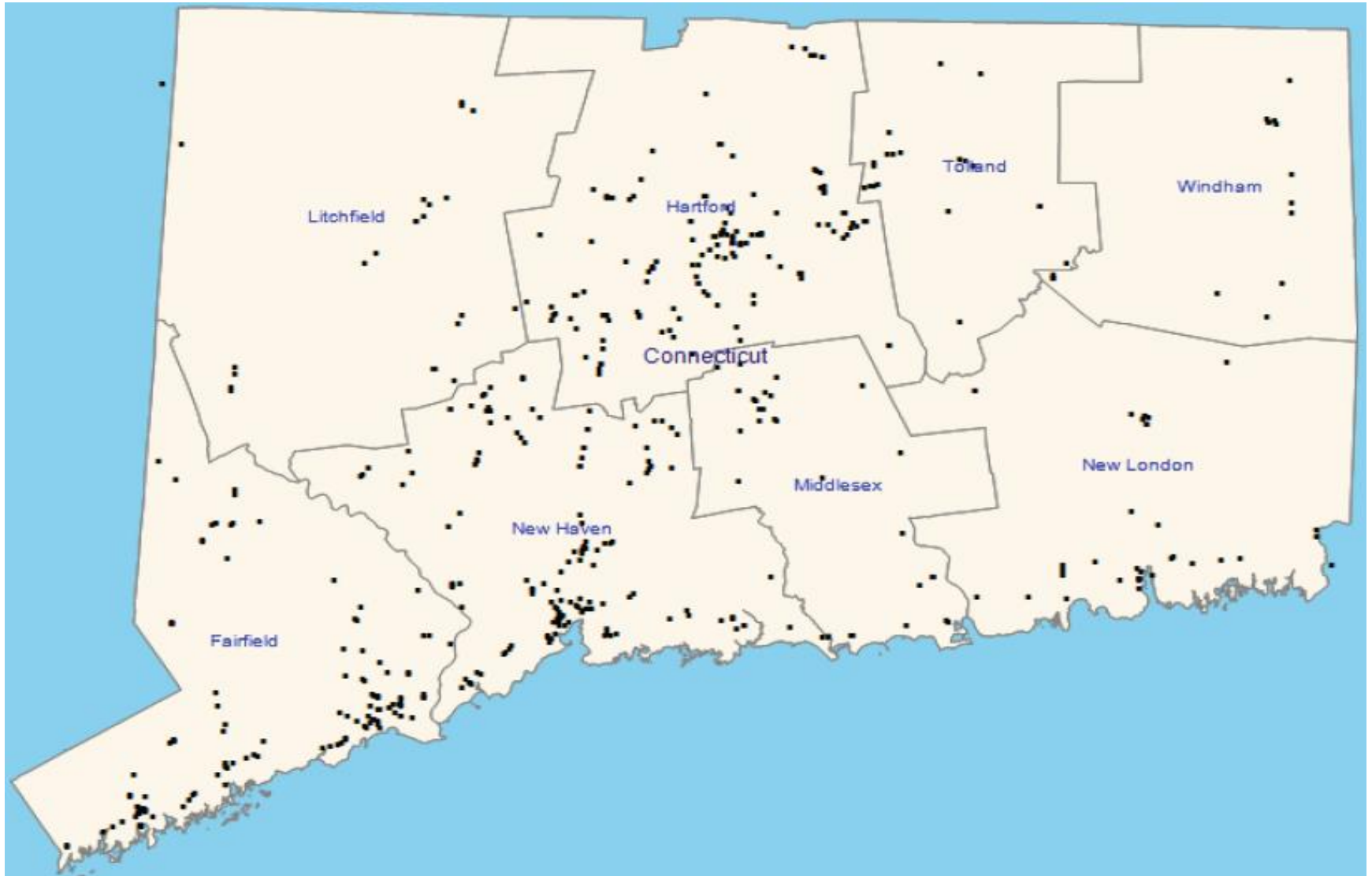
PCMH Total Participating Providers/Practitioners by Quarter
Quarter ending September 2018 through September 2022





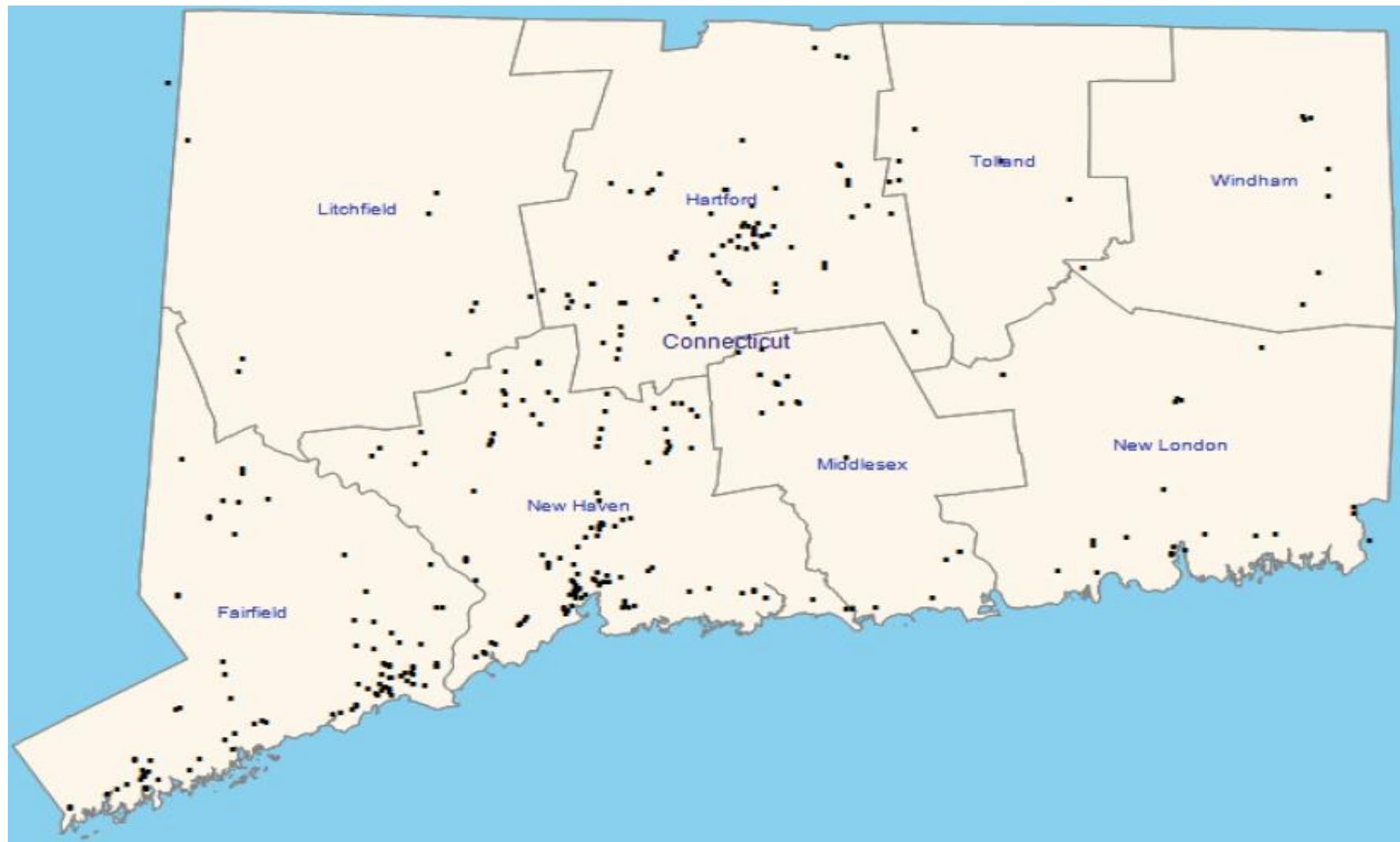
PCMH Practice Site Locations

All PCMH Program Practice Site Locations



Note: Data is as of September 30, 2022 – Maps are updated quarterly.

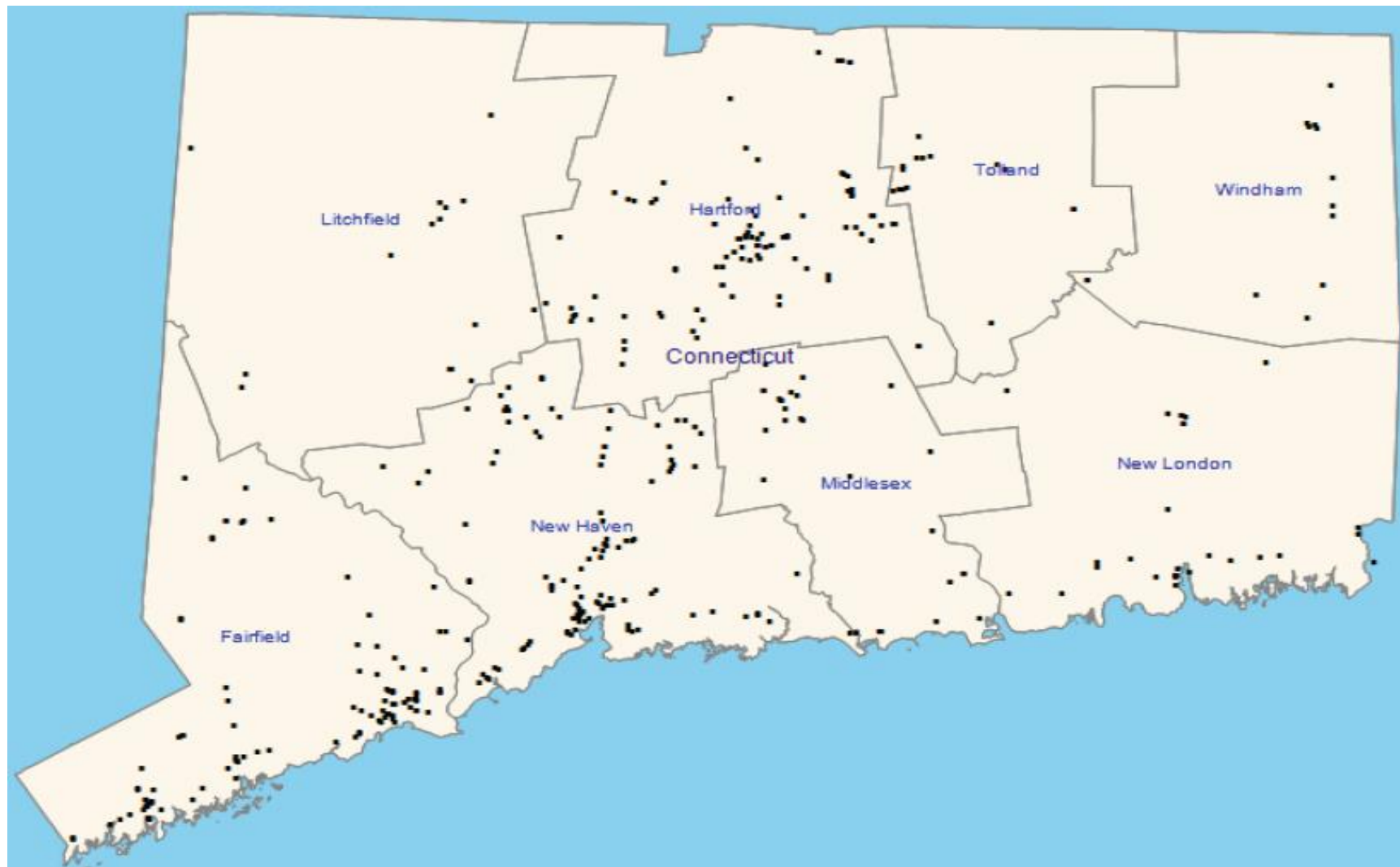
Internal Medicine PCMH Program Practice Site Locations



Note: Data is as of September 30, 2022 – Maps are updated quarterly.

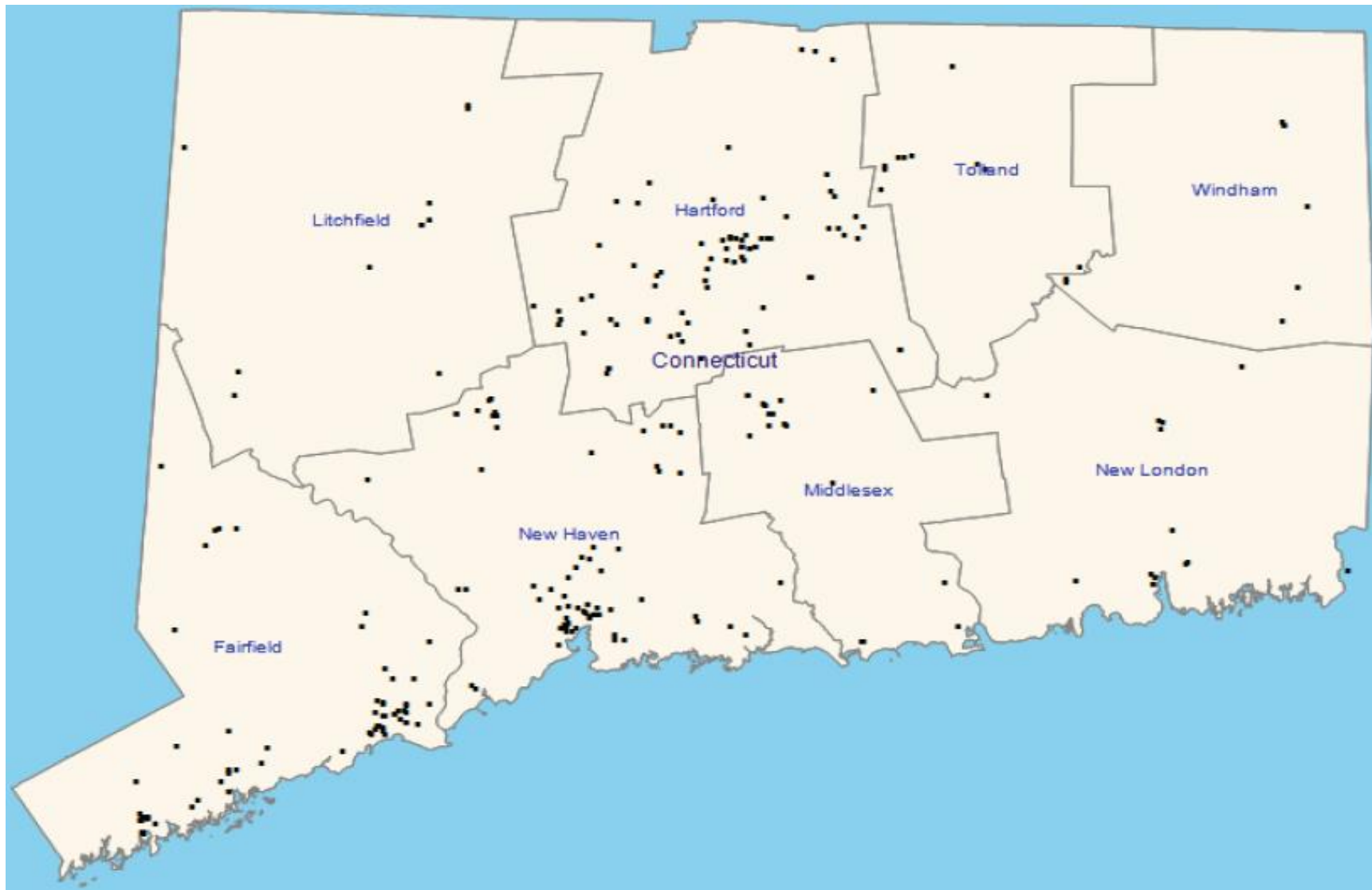
Family Practice PCMH Program

Practice Site Locations



Note: Data is as of September 30, 2022 – Maps are updated quarterly.

Pediatric PCMH Program Practice Site Locations



Note: Data is as of September 30, 2022 – Maps are updated quarterly.